



Industrial Grade Durable Black Embedded Steel Plate ISO9001 150*150 180*180

Our Product Introduction

for more products please visit us on galvmetal.com

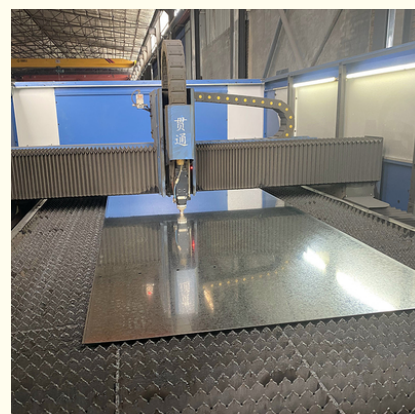
Basic Information

- Place of Origin: Hebei, China
- Certification: ISO9001
- Minimum Order Quantity: Negotiable
- Price: Negotiable
- Packaging Details: According to customer needs
- Delivery Time: 15-30 work days
- Payment Terms: TT



Product Specification

- Warranty: 1 Year
- Application: Building Construction
- Country Of Origin: China
- Function: Support And Fixation
- Material: Steel
- Package Contents: 10 Pieces
- Color: Black
- Installation Method: Embedded
- Shape: 150*150 180*180 190*190 200*200 250*250
- Size: Customization
- Highlight: **black embedded steel plate, embedded steel plate iso9001, industrial steel plate embedded in concrete**



Product Description

Product Description:

Our Embedded Plates in Concrete are made of high-quality steel, ensuring reliable and durable support for any project. They are designed to be embedded directly into concrete, providing a secure attachment point for any structure. As a result, these embedded components are ideal for use in a variety of construction projects, from large-scale commercial developments to small-scale residential builds.

Whether you are building a new home, a commercial facility, or anything in between, our Embedded Plates in Concrete provide the support and fixation needed to ensure a successful project. The small size of these metal embedded parts makes them easy to integrate into any design, while their universal compatibility ensures they can be used in a wide range of applications.

So why wait? Order our Embedded Plates in Concrete today and take the first step towards a successful construction project. With their high-quality steel construction, reliable support, and easy integration, these metal embedded parts are the perfect addition to any construction toolkit.

Technical Parameters:

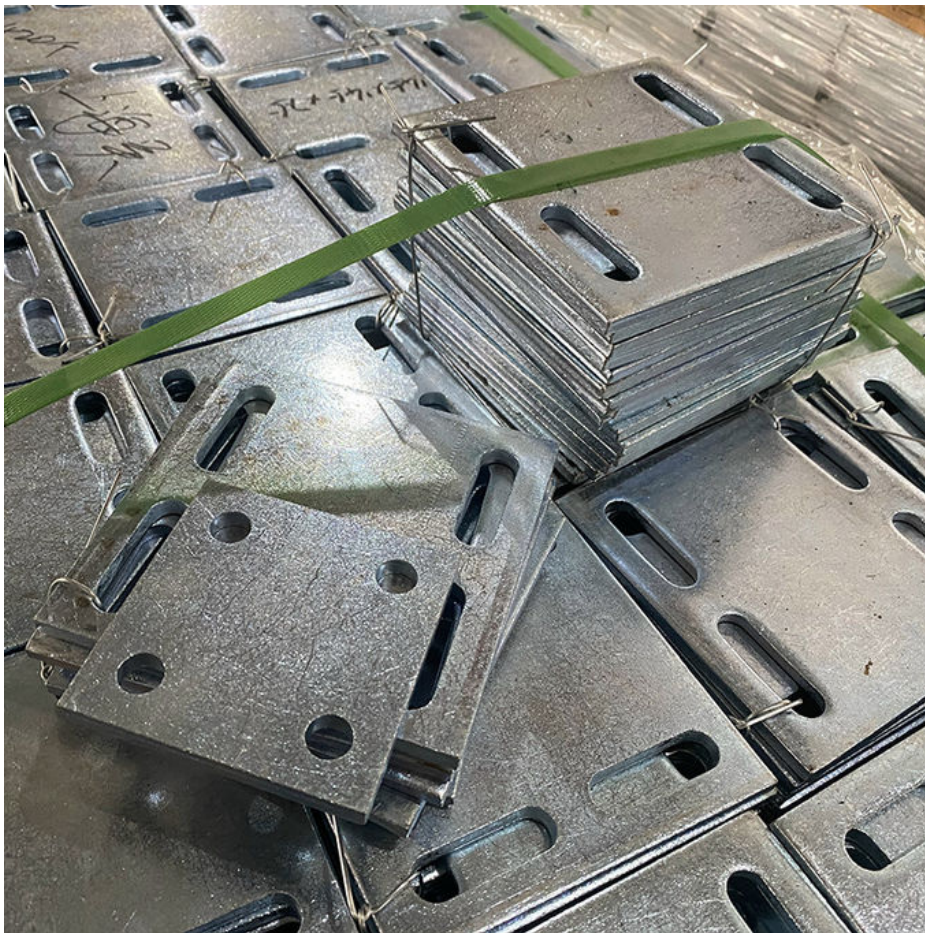
Material:	Steel
Application:	Building Construction
Compatibility:	Universal
Function:	Support And Fixation
Shape:	Rectangular
Weight:	Standard
Size:	Small
Color:	Black
Country Of Origin:	China
Warranty:	1 Year

Applications:

Our Embedded Plates In Concrete come in a small size and rectangular shape, and are colored black. The package contents consist of 10 pieces, and the packaging details are according to the customer's needs. The delivery time for these Embedded Components is typically 15-30 work days, and the payment terms are TT.

These Embedded Plates In Concrete are ideal for use in various building construction scenarios. They are widely used in the construction of buildings, bridges, tunnels, and other infrastructure projects. They are particularly useful in situations where there is a need for strong and durable metal embedded parts that can withstand heavy loads and extreme weather conditions.

The Embedded Components are easy to install and can be used in both new and existing structures. They are particularly useful in situations where there is a need to reinforce or repair existing structures. These Building embedded parts are highly versatile and can be used in a variety of applications, including residential, commercial, and industrial construction projects.



Packing and Shipping:

Product Name: Embedded Plates In Concrete

Product Description: These plates are embedded into concrete structures to provide a connection point for other structural elements.

Packaging: The plates will be packaged in cardboard boxes with each plate individually wrapped in protective material to prevent scratching or damage during shipping. The boxes will be sealed with industrial-strength tape to ensure they do not open during transit.

Shipping: The plates will be shipped via a reputable courier service. Shipping fees will be calculated based on the weight and destination of the order. Customers will receive a tracking number once the order has been shipped.

FAQ:

Q: What is an embedded plate in concrete?

A: An embedded plate in concrete is a steel plate that is cast into a concrete structure to provide a connection point for another structural element.

Q: Where are your embedded plates manufactured?

A: Our embedded plates are manufactured in Hebei, China.

Q: What certifications do your embedded plates have?

A: Our embedded plates are certified with ISO9001.

Q: What is the minimum order quantity for your embedded plates?

A: The minimum order quantity for our embedded plates is negotiable.

Q: What are your payment terms for embedded plate orders?

A: Our payment terms for embedded plate orders are TT.

Q: What is the price of your embedded plates?

A: The price of our embedded plates is negotiable and dependent on the quantity ordered.

Q: How are your embedded plates packaged for delivery?

A: Our embedded plates are packaged according to customer needs.

Q: What is the delivery time for your embedded plates?

A: Our delivery time for embedded plates is typically 15-30 work days.



Tianjin Baoli Gold Pipe Co., Ltd



+86-15022596169



tjbaolijin@126.com



galvmetal.com

Jinghai District, Tianjin City, China

