



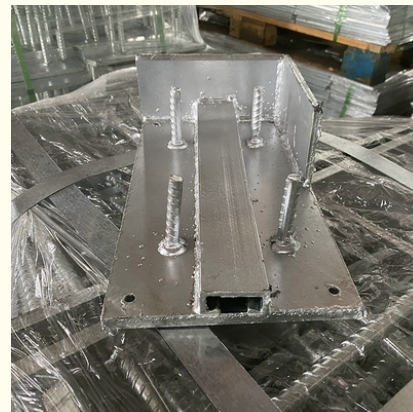
Enduring Performance Embed Plates For Concrete Shockproof Parts Lasting 8mm 10mm 15mm

Our Product Introduction

for more products please visit us on galvmetal.com

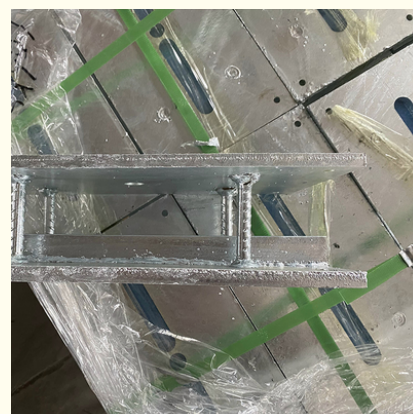
Basic Information

- Place of Origin: Hebei, China
- Certification: ISO9001
- Minimum Order Quantity: Negotiable
- Price: Negotiable
- Packaging Details: According to customer needs
- Delivery Time: 15-30 work days
- Payment Terms: TT



Product Specification

- Flexibility: No
- Heat Resistance: Yes
- Waterproof: Yes
- Compatibility: Universal
- Installation Method: Punching Installation
- Size: Standard
- Durability: High
- Shockproof: Yes
- Thickness: 8mm 10mm 15mm
- Connection Method: Welding
- Highlight: **embed plates for concrete shockproof,
shockproof steel embed plates in concrete,
8mm embed plates for concrete**



Product Description

Product Description:

The Embedded Parts Rear comes in a sleek and stylish black color, making it a great addition to any project. Not only is it stylish, but it is also highly resistant to corrosion, ensuring that it will last for years to come.

Installation is made easy with the punching installation method. Simply punch a hole where you want to place the Embedded Parts Rear, and you're done! The package contains 1 Rear Embedded Part, making it a convenient and affordable option for your installation needs. The Embedded Parts Rear is compatible with a wide range of products, making it a universal solution for your projects. Whether you're installing a new piece of equipment or upgrading an existing one, the Embedded Parts Rear is the perfect choice.

Overall, our Embedded Parts Rear is a high-quality, durable, and stylish solution for all your installation needs. With its corrosion-resistant properties and easy installation process, it is sure to be a great addition to your project. Don't hesitate, get your Embedded Parts Rear today!

Technical Parameters:

Shockproof	Yes
Compatibility	Universal
Size	Standard
Flexibility	No
Installation Method	Punching Installation
Waterproof	Yes
Package Contents	1 Rear Embedded Part
Heat Resistance	Yes
Weight	Standard
Durability	High

Applications:

Our Rear Embedded Parts are designed to withstand extreme temperatures and are heat resistant, making them perfect for use in areas with high temperatures. Additionally, these Anchor bolt embedded parts are waterproof, ensuring they can be used in wet environments without any issues.

Whether you need to anchor a fence post, install a signpost, or secure a mailbox, our Rear Embedded Parts are the perfect solution. They are easy to install and provide a strong and stable base for any application.

With our Rear Embedded Parts, you can be confident in the quality and reliability of our products. Contact us today to learn more about how we can help support your construction needs.



Packing and Shipping:

Product Packaging:

The embedded parts are carefully packed in a sturdy box to ensure their safety during transit. The box is sealed with tamper-evident tape for added security.

Shipping:

Our standard shipping method is via courier service, and we strive to dispatch orders within 1-2 business days of receiving payment. Delivery times vary depending on your location, but typically range from 3-7 business days.

FAQ:

A: The Embedded Parts are manufactured in Hebei, China.

2. Q: Is there any certification for the Embedded Parts?

A: Yes, the Embedded Parts are certified with ISO9001.

3. Q: What is the minimum order quantity for the Embedded Parts?

A: The minimum order quantity for the Embedded Parts is negotiable.

4. Q: What is the price of the Embedded Parts?

A: The price for the Embedded Parts is negotiable and may vary depending on the order quantity and other factors.

5. Q: What are the packaging and delivery details for the Embedded Parts?

A: The packaging details for the Embedded Parts will be according to customer needs. The delivery time is estimated to be 15-30 work days. Payment terms are TT.



Tianjin Baoli Gold Pipe Co., Ltd



+86-15022596169



tjbaolijin@126.com



galvmetal.com

Jinghai District, Tianjin City, China