



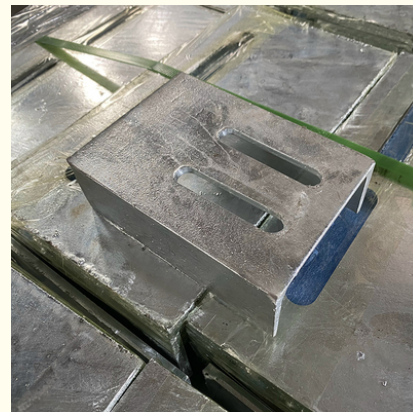
Punching Installation Steel Embed Plates In Concrete 8mm 10mm Durability And Corrosion Resistance

Our Product Introduction

for more products please visit us on galvmetal.com

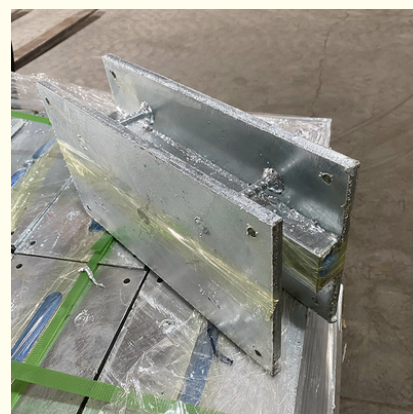
Basic Information

- Place of Origin: Hebei, China
- Certification: ISO9001
- Minimum Order Quantity: Negotiable
- Price: Negotiable
- Packaging Details: According to customer needs
- Delivery Time: 15-30 work days
- Payment Terms: TT



Product Specification

- Shockproof: Yes
- Material: Metal
- Installation Method: Punching Installation
- Durability: High
- Package Contents: 1 Rear Embedded Part
- Color: Silvery
- Compatibility: Universal
- Corrosion Resistance: Yes
- Shape: Square Rectangle
- Thickness: 8mm 10mm
- Highlight: steel embed plates in concrete 8mm,
8mm embed steel plate in concrete,
10mm embed steel plate in concrete



Product Description:

Our embedded parts are designed to be standard size, making them easy to integrate into your existing construction or engineering plans. And with a standard weight, you won't have to worry about any additional strain on your equipment or structure.

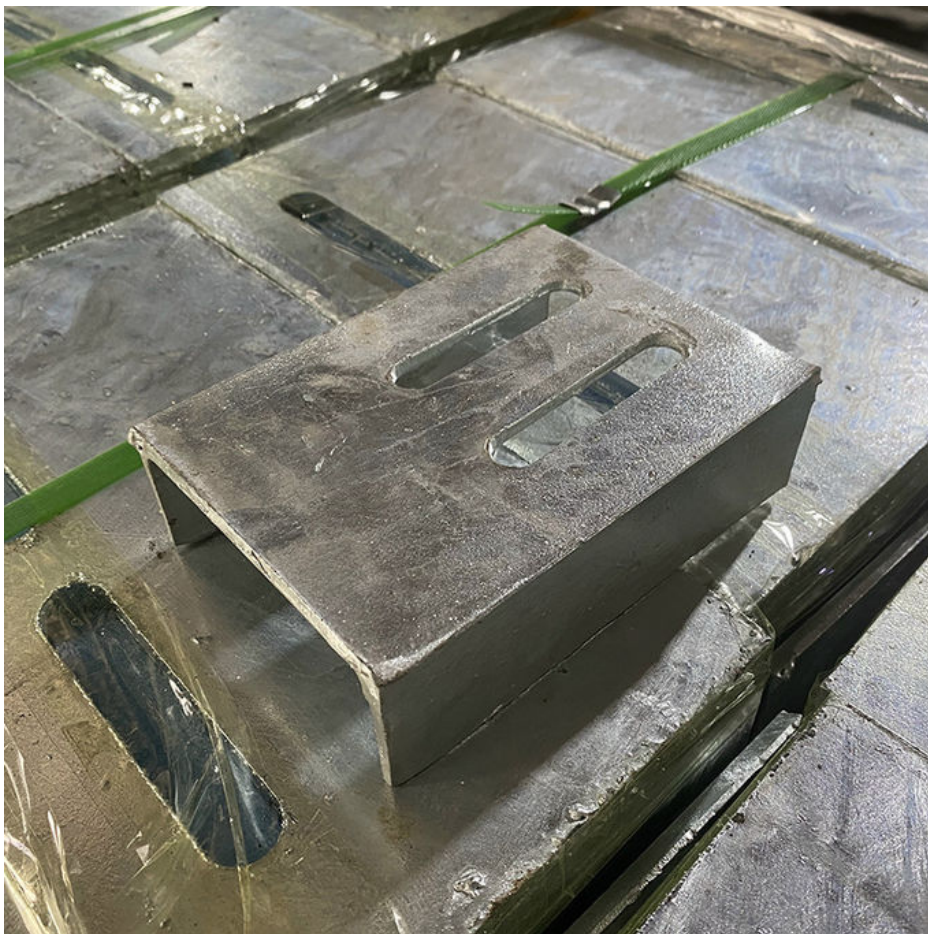
One of the key advantages of our Embedded Parts Rear is their high level of durability. Unlike other embedded parts on the market, our products are built to last, even under the most challenging conditions. Whether you're dealing with extreme temperatures, harsh weather, or heavy use, our embedded parts will continue to perform at a high level, year after year.

While our embedded parts don't offer a high level of flexibility, they're designed to be extremely sturdy and reliable, making them ideal for a wide range of construction and engineering applications. Whether you're building a new structure from scratch or making modifications to an existing one, our embedded parts are an excellent choice for any project.

So if you're looking for high-quality, durable embedded parts that can stand up to even the most challenging conditions, look no further than our top-of-the-line Embedded Parts Rear. With their superior strength, reliability, and performance, our embedded parts are the perfect choice for any construction or engineering project, large or small.

Technical Parameters:

Product Name	Rear Embedded Parts
Corrosion Resistance	Yes
Color	Black
Shockproof	Yes
Flexibility	No
Compatibility	Universal
Weight	Standard
Material	Metal
Size	Standard
Heat Resistance	Yes
Waterproof	Yes



Packing and Shipping:

Product Packaging:

Embedded Parts

Protective foam packaging to prevent damage during shipping

Shipping:

Ships within 2 business days

Free shipping within the United States

International shipping available for an additional fee

FAQ:

Q: Where is the Embedded Parts product made?

A: The Embedded Parts product is made in Hebei, China.

Q: Does the Embedded Parts product have any certification?

A: Yes, the Embedded Parts product has ISO9001 certification.

Q: What is the minimum order quantity for the Embedded Parts product?

A: The minimum order quantity for the Embedded Parts product is negotiable.

Q: How much does the Embedded Parts product cost?

A: The price of the Embedded Parts product is negotiable.

Q: How is the Embedded Parts product packaged and delivered?

A: The Embedded Parts product is packaged according to customer needs and delivered within 15-30 work days.

Q: What are the payment terms for the Embedded Parts product?

A: The payment terms for the Embedded Parts product are TT.



Tianjin Baoli Gold Pipe Co., Ltd



+86-15022596169



tjbaolijin@126.com



galvmetal.com

Jinghai District, Tianjin City, China