



Anti Shock Waterproof Black Punching Installation Embedded Parts Durability 4mm 6mm 8mm 10mm

Our Product Introduction

for more products please visit us on galvmetal.com

Basic Information

- Place of Origin: Hebei, China
- Certification: ISO9001
- Minimum Order Quantity: Negotiable
- Price: Negotiable
- Packaging Details: According to customer needs
- Delivery Time: 15-30 work days
- Payment Terms: TT



Product Specification

- Shockproof: Yes
- Waterproof: Yes
- Flexibility: No
- Color: Black
- Installation Method: Punching Installation
- Size: Standard
- Durability: High
- Compatibility: Universal
- Thickness: 4mm 6mm 8mm 10mm
- Connection Method: Welding
- Highlight: **waterproof embedded parts,
waterproof embedded plates in concrete,
black embedded parts**



Product Description

Product Description:

Our embedded parts are perfect for a wide range of applications, from heavy-duty machinery to sensitive electronic equipment. With a weight that is standard and easy to handle, you won't have to worry about carrying heavy loads or dealing with difficult installations. Our punching installation method is simple and straightforward, making it easy to install your new embedded parts with minimal hassle. Each package contains 1 rear embedded part, so you can get started with your installation right away. Our embedded parts are also heat-resistant, which means you won't have to worry about them melting or warping under high temperatures. This makes them ideal for use in hot and humid environments, as well as in situations where high temperatures are a concern.

At the heart of our embedded parts is our high-quality embedded steel plate. This steel plate is designed to provide maximum strength and durability, ensuring that your equipment stays secure and protected no matter what. And because our embedded parts are shockproof, you won't have to worry about damage from bumps, drops, or other impacts.

Whether you're looking to protect sensitive equipment or secure heavy machinery, our embedded parts are the perfect choice. With their high-quality construction and durable design, they are sure to provide years of reliable service. So why wait? Order your embedded parts today and start enjoying the peace of mind that comes with knowing your equipment is safe and secure!

Technical Parameters:

Product Name:	Embedded Parts Rear / Anchor bolt embedded parts / Rear Embedded Parts
Size:	Standard
Material:	Metal
Durability:	High
Corrosion Resistance:	Yes
Compatibility:	Universal
Weight:	Standard
Flexibility:	No
Shockproof:	Yes
Heat Resistance:	Yes
Installation Method:	Punching Installation

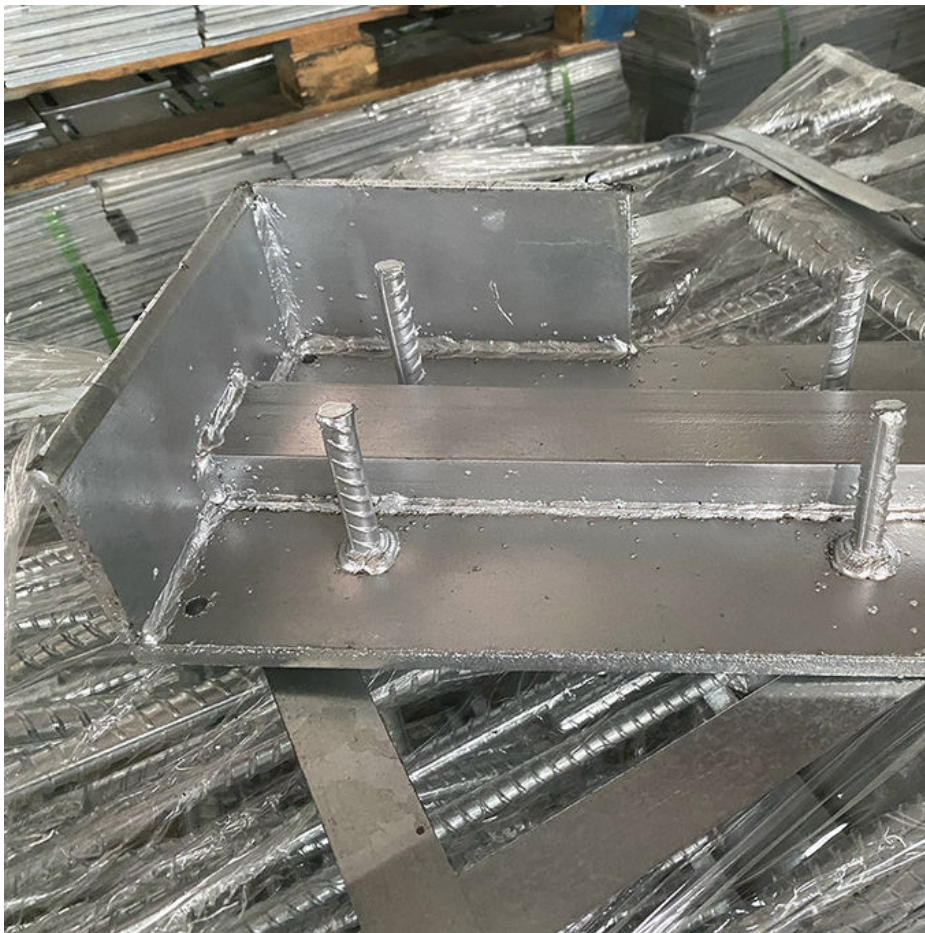
Applications:

These embedded parts are compatible with any project that requires punching installation. They are a universal solution that can be used in a variety of scenarios. The weight of these parts is standard, making them easy to handle and install. They come in a sleek black color that is perfect for any project.

Our embedded parts are also shockproof, which makes them perfect for projects that require durability and resilience. They are designed to withstand the toughest conditions and are built to last. These parts are perfect for industrial applications, construction projects, and more.

With a delivery time of 15-30 work days, our embedded parts are perfect for projects with tight deadlines. We accept TT as payment terms, making it easy for our customers to purchase our products. If you need any assistance with installation, our team is always happy to help.

Overall, our non-prefabricated embedded parts are the perfect solution for a variety of applications. Whether you're working on a construction project or an industrial application, our anchor bolt embedded parts are the ideal choice. So why wait? Contact us today to learn more about how we can help you with your next project.



Packing and Shipping:

Product Packaging for Embedded Parts:

The embedded parts are carefully packaged to ensure safe delivery. Each part is individually wrapped in bubble wrap and placed in a sturdy cardboard box. The box is then sealed with packing tape to prevent any movement or damage during shipping.

Shipping:

Orders for embedded parts are typically shipped within 2 business days of purchase. We offer standard shipping, which usually takes 5-7 business days for delivery, and expedited shipping, which takes 2-3 business days for delivery. Shipping costs vary depending on the destination and the weight of the package. Customers will receive a tracking number once their order has been shipped.

FAQ:

A: The Embedded Parts product is manufactured in Hebei, China.

2. Q: What certification does the Embedded Parts product have?

A: The Embedded Parts product is certified by ISO9001.

3. Q: What is the minimum order quantity for the Embedded Parts product?

A: The minimum order quantity for the Embedded Parts product is negotiable.

4. Q: How much does the Embedded Parts product cost?

A: The price of the Embedded Parts product is negotiable.

5. Q: How is the Embedded Parts product packaged and delivered?

A: The Embedded Parts product is packaged according to customer needs and delivered within 15-30 work days.

Payment for the Embedded Parts product is accepted via TT.



Tianjin Baoli Gold Pipe Co., Ltd



+86-15022596169



tjbaolijin@126.com



galvmetal.com

Jinghai District, Tianjin City, China