



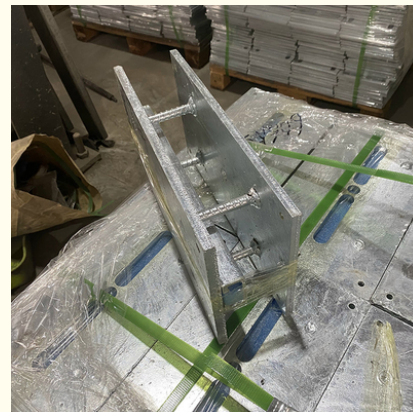
Corrosion Resistant Metal Embedded Parts For Durable Structures

Our Product Introduction

for more products please visit us on galvmetal.com

Basic Information

- Place of Origin: Hebei, China
- Certification: ISO9001
- Minimum Order Quantity: Negotiable
- Price: Negotiable
- Packaging Details: According to customer needs
- Delivery Time: 15-30 work days
- Payment Terms: TT



Product Specification

- Installation Method: Punching Installation
- Durability: High
- Flexibility: No
- Color: Silvery
- Corrosion Resistance: Yes
- Heat Resistance: Yes
- Material: Metal
- Size: 100*100 120*120 140*140 150*150
- Thickness: 6mm 8mm 10mm
- Highlight: 6mm embedded parts, 8mm embedded parts, 6mm embedded steel plates



Product Description

Product Description:

Our embedded parts are made from premium materials that are designed to withstand the toughest conditions and provide long-lasting performance. With their high durability and strength, these parts can withstand heavy loads, extreme temperatures, and other challenging conditions, ensuring reliable performance and safety in any application.

One of the key benefits of our anchor bolt embedded parts is their waterproof design. The black color of these parts not only adds to their aesthetic appeal but also ensures that they are resistant to water and other elements, making them ideal for use in outdoor and wet environments.

Whether you're looking to secure heavy equipment, stabilize structures, or provide a reliable anchoring solution for other applications, our anchor bolt embedded parts are the perfect choice. With their universal compatibility, high durability, and waterproof design, they are the ideal solution for any application that requires a secure and reliable anchor point.

Technical Parameters:

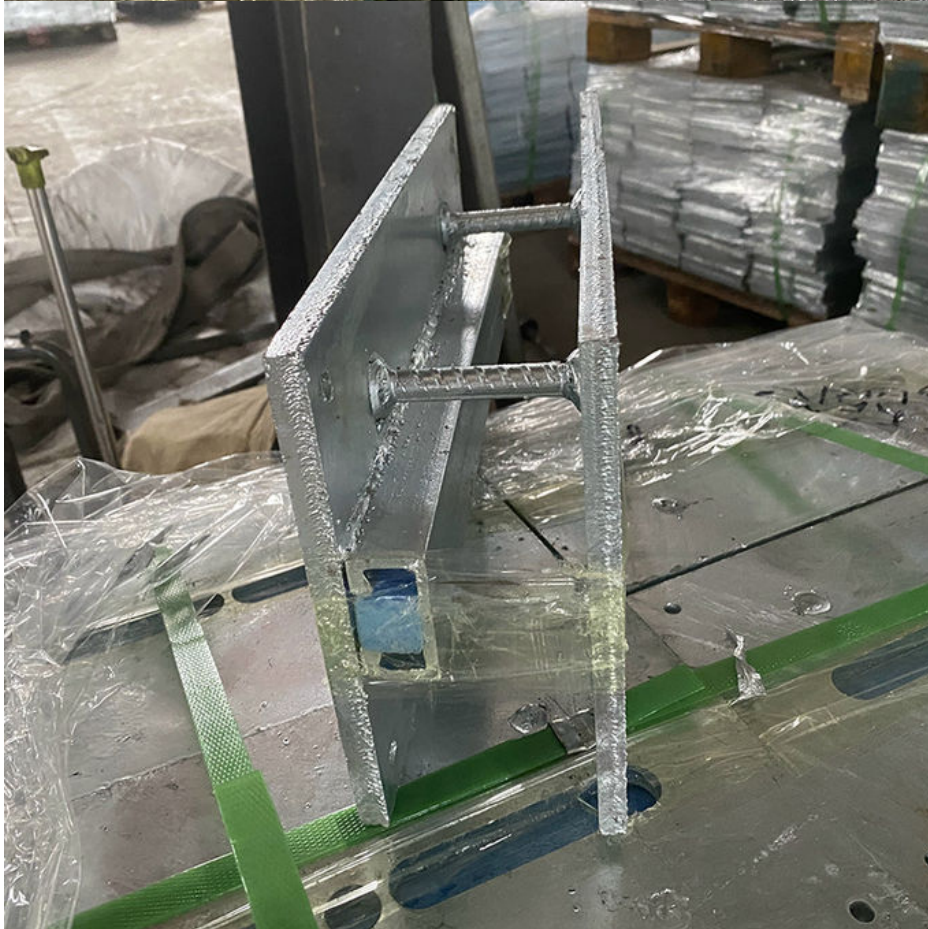
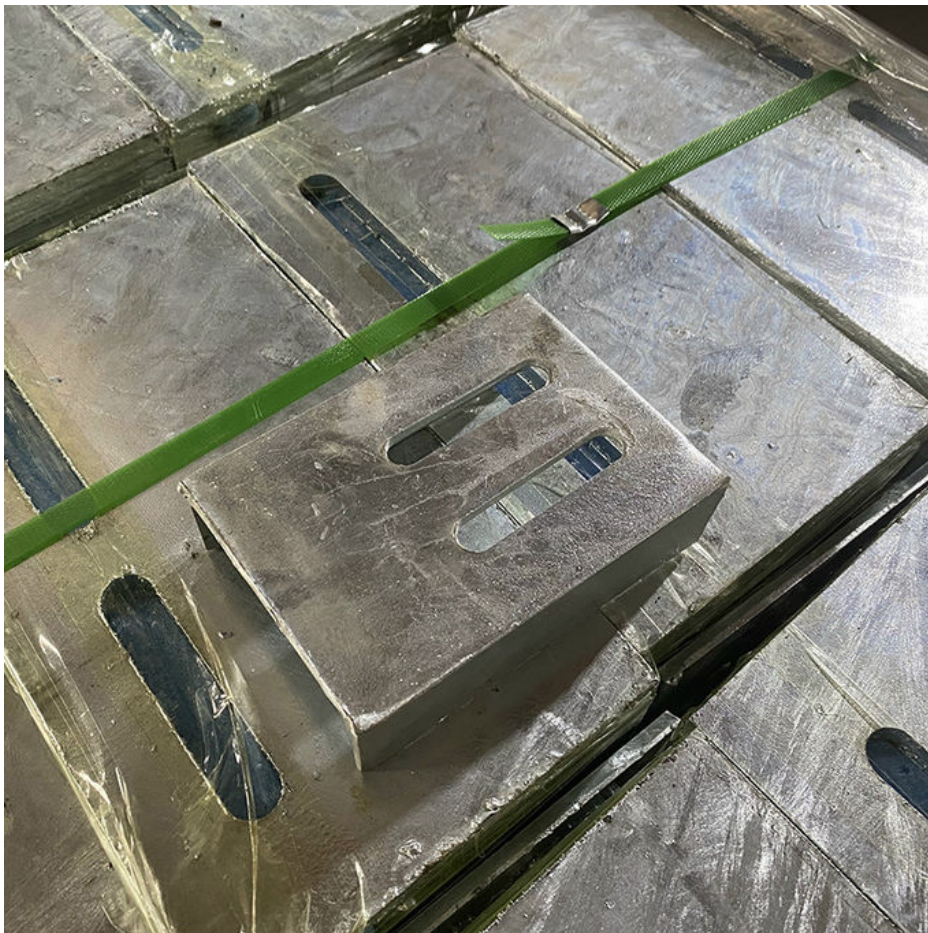
Product Attribute	Description
Product Name	Embedded Parts Rear
Flexibility	No
Shockproof	Yes
Waterproof	Yes
Material	Metal
Weight	Standard
Heat Resistance	Yes
Package Contents	1 Rear Embedded Part
Compatibility	Universal
Durability	High
Additional Information	This product is an embedded steel plate designed for rear installation. It is durable, shockproof, and waterproof, making it suitable for various applications.

Applications:

The Embedded Parts Rear are a versatile product that can be used in a variety of settings. They are compatible with universal sizes and are made of metal, making them durable and long-lasting. These embedded parts are also waterproof, making them ideal for outdoor applications where exposure to the elements is a concern.

The Embedded Parts Rear are ideal for use in a variety of scenarios, including construction, automotive, and industrial applications. They can be used for reinforcing structures, securing machinery and equipment, and providing support for various components. These embedded parts are also commonly used in the manufacturing of furniture and electronics.

The universal compatibility and standard size of the Embedded Parts Rear make them a convenient choice for businesses that require a product that can be used across a variety of applications. The black color of these embedded parts makes them easy to integrate into existing designs and structures, providing a seamless and professional appearance.



Packing and Shipping:

Product Packaging:

The embedded parts will be carefully packed in a sturdy cardboard box to prevent damage during shipping.

The box will be sealed with high-quality packing tape to ensure that the parts stay in place.

Inside the box, the parts will be wrapped in protective material to prevent scratches and other damage.

The packaging will also include an instruction manual for the parts.

Shipping:

The embedded parts will be shipped via a trusted courier service.

The shipping cost will be calculated based on the weight and destination of the package.

The estimated delivery time will be provided to the customer upon checkout.

A tracking number will be provided to the customer so they can monitor the progress of their shipment.

FAQ:

Q: What is the place of origin of the Embedded Parts product?

A: The Embedded Parts product is manufactured in Hebei, China.

2.

Q: Is the Embedded Parts product certified?

A: Yes, the Embedded Parts product is certified with ISO9001.

3.

Q: What is the minimum order quantity for the Embedded Parts product?

A: The minimum order quantity for the Embedded Parts product is negotiable.

4.

Q: How much is the price of the Embedded Parts product?

A: The price of the Embedded Parts product is negotiable.

5.

Q: How is the Embedded Parts product packaged and delivered?

A: The Embedded Parts product is packaged according to customer needs and delivered within 15-30 work days. Payment terms are TT.



Tianjin Baoli Gold Pipe Co., Ltd



+86-15022596169



tjbaolijin@126.com



galvmetal.com

Jinghai District, Tianjin City, China