



## 4mm 6mm 8mm Universal Standard Embedded Parts For Machines And Electronics Applications

### Our Product Introduction

for more products please visit us on [galvmetal.com](http://galvmetal.com)

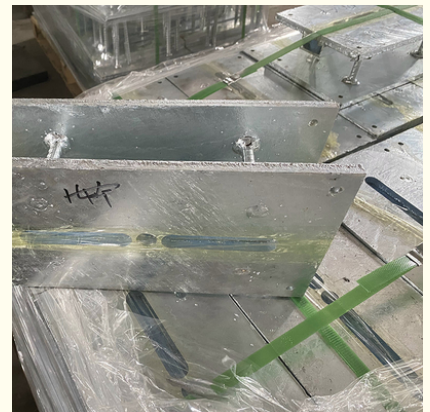
#### Basic Information

- Place of Origin: Hebei, China
- Certification: ISO9001
- Minimum Order Quantity: Negotiable
- Price: Negotiable
- Packaging Details: According to customer needs
- Delivery Time: 15-30 work days
- Payment Terms: TT



#### Product Specification

- Heat Resistance: Yes
- Installation Method: Punching Installation
- Weight: Standard
- Size: 100\*100 120\*120 140\*140 150\*150
- Compatibility: Universal
- Shockproof: Yes
- Corrosion Resistance: Yes
- Flexibility: No
- Thickness: 4mm 6mm 8mm
- Highlight: **standard embedded parts,  
4mm embedded parts,  
4mm embedded steel plates**



## Product Description

### Product Description:

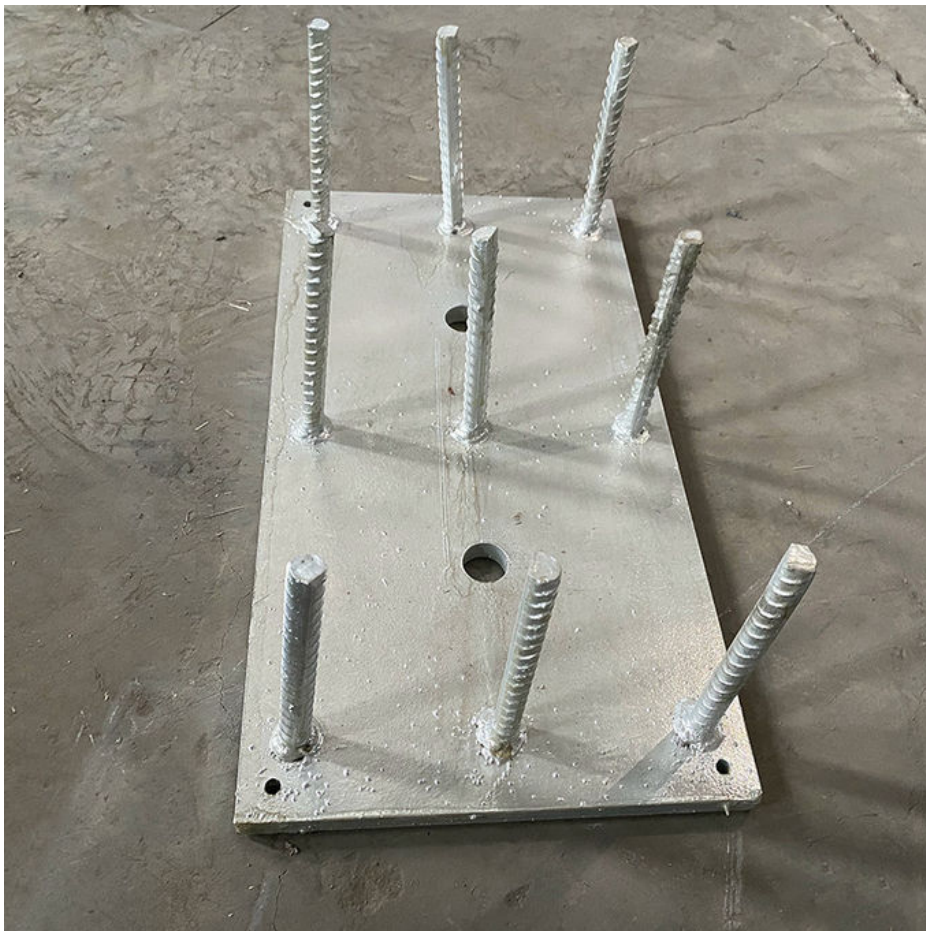
One of the key features of these Rear Embedded Parts is their waterproofing. This is especially important for those who frequently drive in wet or humid conditions. The waterproofing ensures that water does not seep into the bumper and cause damage to the vehicle's internal components. With the Rear Embedded Parts, you can rest assured that your vehicle is protected from the elements. Another important feature of the Rear Embedded Parts is their high durability. Made from high-quality materials, these parts are designed to withstand even the toughest conditions. Whether you're driving on rough terrain or in extreme weather, the Rear Embedded Parts will keep your vehicle protected and looking great. Although the Rear Embedded Parts are not flexible, they do offer a standard weight that won't add any unnecessary bulk to your vehicle. This makes them an ideal choice for those who want to add durability and waterproofing without sacrificing performance or fuel efficiency.

### Technical Parameters:

Size	Standard
Durability	High
Flexibility	No
Installation Method	Punching Installation
Weight	Standard
Compatibility	Universal
Material	Metal
Color	Black
Package Contents	1 Rear Embedded Part
Shockproof	Yes

### Applications:

The embedded steel plate design of these parts makes them suitable for a range of occasions and scenarios. They are commonly used in construction projects, where they are embedded into concrete to provide additional support and stability. They can also be used in machinery and equipment assembly, where they are embedded into the structure to provide anchorage points for other components. Our non-prefabricated embedded parts have a negotiable minimum order quantity and price, ensuring that you can purchase the exact quantity you need at an affordable cost. Additionally, we offer flexible packaging options according to your specific needs, ensuring that your order arrives in the best condition possible.



### **Packing and Shipping:**

#### **Product Packaging:**

The embedded parts will be securely packed in a plastic tray.

The tray will be placed in a cardboard box with appropriate cushioning for protection.

The box will be sealed with adhesive tape.

Shipping:

The product will be shipped via a reliable courier service.  
The shipping charges will be determined based on the destination and weight of the package.  
The estimated delivery time will be provided at the time of checkout.

---

### FAQ:

Q1: Where is the Embedded Parts product made?

A1: The Embedded Parts product is made in Hebei, China.

Q2: What kind of certification does the Embedded Parts product have?

A2: The Embedded Parts product has ISO9001 certification.

Q3: What is the minimum order quantity for the Embedded Parts product?

A3: The minimum order quantity for the Embedded Parts product is negotiable.

Q4: How much does the Embedded Parts product cost?

A4: The price for the Embedded Parts product is negotiable.

Q5: What are the packaging and delivery details for the Embedded Parts product?

A5: The packaging details for the Embedded Parts product are according to customer needs. The delivery time is 15-30 work days. The payment terms are TT.



**Tianjin Baoli Gold Pipe Co., Ltd**



+86-15022596169



tjbaolijin@126.com



galvmetal.com

Jinghai District, Tianjin City, China