



Heavy Load Waterproof Embedded Parts Rear For Equipment Durability

Our Product Introduction

for more products please visit us on galvmetal.com

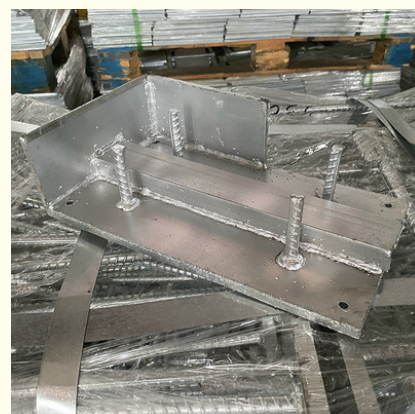
Basic Information

- Place of Origin: Hebei, China
- Certification: ISO9001
- Minimum Order Quantity: Negotiable
- Price: Negotiable
- Packaging Details: According to customer needs
- Delivery Time: 15-30 work days
- Payment Terms: TT



Product Specification

- Waterproof: Yes
- Compatibility: Universal
- Flexibility: No
- Installation Method: Punching Installation
- Heat Resistance: Yes
- Material: Metal
- Shockproof: Yes
- Corrosion Resistance: Yes
- Connection Method: Welding
- Size: 100*100 120*120 140*140 150*150
- Highlight: waterproof embedded parts,
waterproof embedded plates in concrete,
durability embedded parts



Product Description

Product Description:

Our Rear Embedded Parts are highly heat-resistant, making them perfect for use in environments with high temperatures. They are designed to withstand extreme heat without compromising on performance or quality.

These parts are highly durable and built to last, ensuring that your project will remain secure and stable for years to come. Whether you're working on a commercial or residential project, our Rear Embedded Parts are the perfect choice for reliable and long-lasting performance.

The installation method for our Rear Embedded Parts is punching installation, making them easy to install and use. You won't need to worry about complicated installation processes or special tools - simply follow the instructions and you'll have your parts installed in no time.

Overall, if you're looking for high-quality Rear Embedded Parts that are durable, heat-resistant, and easy to install, look no further than our selection. With our parts, you can be confident that your project will be completed to the highest standards of quality and reliability.

Features:

- Embedded steel plate for added strength
- Rear Embedded Parts for easy installation
- Durable metal construction for long-lasting use
- Shockproof design to protect your equipment
- Standard weight for easy handling

Technical Parameters:

| | |
|----------------------|-----------------------|
| Weight | Standard |
| Color | Black |
| Installation Method | Punching Installation |
| Corrosion Resistance | Yes |
| Size | Standard |
| Compatibility | Universal |
| Heat Resistance | Yes |
| Flexibility | No |
| Waterproof | Yes |
| Material | Metal |

Applications:

Our Anchor bolt embedded parts are highly durable and have excellent corrosion resistance. They are made of high-quality metal, making them universal and compatible with various applications. These embedded parts are available in standard sizes and can be used in many different scenarios.

These Rear Embedded Parts are also effective in building bridges, highways, and other large-scale construction projects. They can be used to secure beams and other structural elements, making them a crucial component in the construction process.

Overall, our Anchor bolt embedded parts are an essential component in any construction project that requires a secure and durable foundation. They are made of high-quality metal, making them resistant to corrosion and highly durable. These embedded parts are available in standard sizes, making them compatible with many different applications. Contact us today to place your order.



Packing and Shipping:

Product Packaging:

The embedded parts will be carefully packed in a sturdy box with protective cushioning to ensure safe delivery. Each part will be individually wrapped to avoid any damage during transit.

Shipping:

We offer free shipping for all orders of embedded parts within the United States. For international orders, shipping charges will be calculated at checkout based on the destination and weight of the package.

FAQ:

Q: Where are the Embedded Parts manufactured?

A: The Embedded Parts are manufactured in Hebei, China.

Q: Is there any certification for the Embedded Parts?

A: Yes, the Embedded Parts are certified with ISO9001.

Q: What is the minimum order quantity for the Embedded Parts?

A: The minimum order quantity for the Embedded Parts is negotiable.

Q: How much do the Embedded Parts cost?

A: The price for the Embedded Parts is negotiable and can vary depending on the quantity ordered and other factors.

Q: How are the Embedded Parts packaged and delivered?

A: The Embedded Parts are packaged according to the customer's needs and are delivered within 15-30 work days. Payment terms are TT.



Tianjin Baoli Gold Pipe Co., Ltd



+86-15022596169



tjbaolijin@126.com



galvmetal.com

Jinghai District, Tianjin City, China