



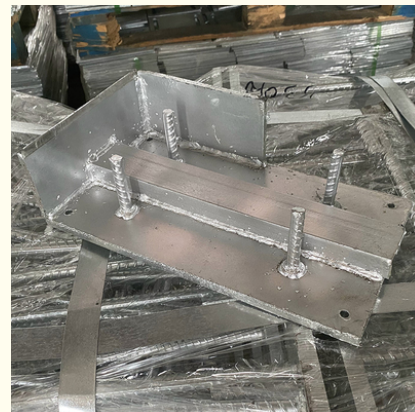
Standard Metal Embed Steel Plate In Concrete 4mm 6mm For Long Lasting Durability

Our Product Introduction

for more products please visit us on galvmetal.com

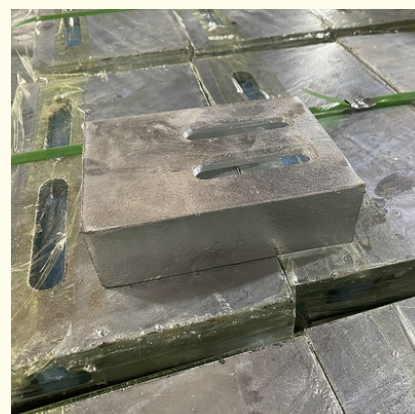
Basic Information

- Place of Origin: Hebei, China
- Certification: ISO9001
- Minimum Order Quantity: Negotiable
- Price: Negotiable
- Packaging Details: According to customer needs
- Delivery Time: 15-30 work days
- Payment Terms: TT



Product Specification

- Package Contents: 1 Rear Embedded Part
- Compatibility: Universal
- Corrosion Resistance: Yes
- Heat Resistance: Yes
- Weight: Standard
- Material: Metal
- Size: Standard
- Durability: High
- Thickness: 4mm 6mm
- Connection Method: Welding
- Highlight: embed steel plate in concrete 4mm,
steel embed plate in concrete wall,
4mm embed plate in concrete wall



Product Description

Product Description:

The Embedded Parts Rear is a must-have for any project that requires a reliable and long-lasting solution. The embedded steel plate ensures that the product is securely anchored in place, providing a sturdy and stable foundation for any equipment or machinery. These embedded parts are also universally compatible, making them a versatile solution for a wide range of applications. Whether you're working in construction, manufacturing, or any other industry that requires heavy-duty equipment, our Embedded Parts product is the ideal choice.

While this product does not offer flexibility, its solid construction ensures that it will remain in place and perform reliably for years to come. The black color of the Embedded Parts product is both sleek and professional, making it a great addition to any project.

Trust in the durability and reliability of our Embedded Parts product. With its shockproof capabilities, high-quality metal construction, and embedded steel plate, this product is the perfect solution for any project that requires a sturdy and long-lasting foundation.

Technical Parameters:

Weight	Standard
Durability	High
Material	Metal
Heat Resistance	Yes
Corrosion Resistance	Yes
Compatibility	Universal
Waterproof	Yes
Shockproof	Yes
Package Contents	1 Rear Embedded Part

Applications:

The embedded parts are shockproof and waterproof, with high durability, making them suitable for use in various scenarios. The installation method is punching installation, which is convenient and easy to operate. These embedded parts are non-prefabricated, ensuring that they are durable and suitable for long-term use.

The anchor bolt embedded parts are ideal for use in construction, especially in large-scale projects where stability and durability are essential. They can be used to secure heavy equipment, machinery, and structures to the ground, ensuring that they remain stable and safe.

The embedded parts are also suitable for use in outdoor environments, where they are exposed to the elements. The shockproof and waterproof properties ensure that they remain intact and functional even in harsh weather conditions.

Overall, the embedded parts are versatile and can be used in a wide range of scenarios. They are durable, shockproof, and waterproof, making them ideal for use in construction, transportation, and industrial applications. The punching installation method is easy to use, and the non-prefabricated design ensures that they are long-lasting and reliable.



Packing and Shipping:

Product Packaging:

The embedded parts will be securely packaged in a cardboard box.

The box will be filled with bubble wrap to prevent any damage during transportation.

Each box will contain a packing slip with the details of the order.

Shipping:

The product will be shipped within 2 business days after the order is placed.
We offer free standard shipping within the United States.
International shipping is available for an additional fee.
Customers will receive a tracking number via email once the product has shipped.

FAQ:

Q: Where is the Embedded Parts product made?

A: The Embedded Parts product is made in Hebei, China.

Q: Does the Embedded Parts product have any certifications?

A: Yes, the Embedded Parts product has been certified with ISO9001.

Q: What is the minimum order quantity for the Embedded Parts product?

A: The minimum order quantity for the Embedded Parts product is negotiable.

Q: How much does the Embedded Parts product cost?

A: The price for the Embedded Parts product is negotiable.

Q: How is the Embedded Parts product packaged and delivered?

A: The Embedded Parts product is packaged according to customer needs and delivered within 15-30 work days.

Q: What payment terms are accepted for the Embedded Parts product?

A: Payment terms for the Embedded Parts product are TT.



Tianjin Baoli Gold Pipe Co., Ltd



+86-15022596169



tjbaolijin@126.com



galvmetal.com

Jinghai District, Tianjin City, China