



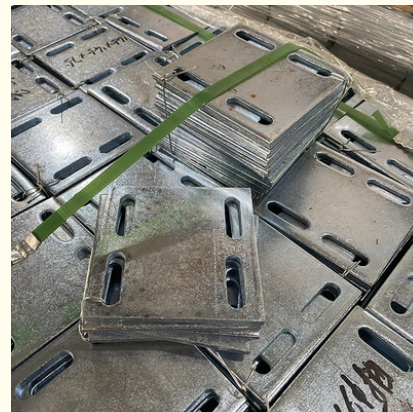
Standard Universal Rear Embedded Part Embedded Plates In Concrete Heavy Duty Punching Installation

Our Product Introduction

for more products please visit us on galvmetal.com

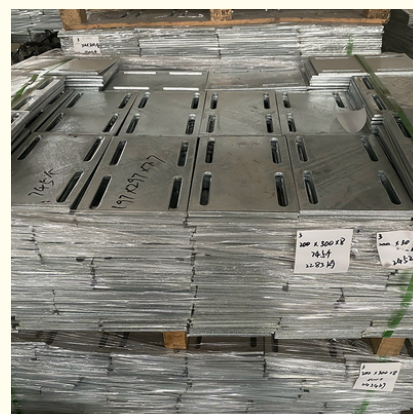
Basic Information

- Place of Origin: Hebei, China
- Certification: ISO9001
- Minimum Order Quantity: Negotiable
- Price: Negotiable
- Packaging Details: According to customer needs
- Delivery Time: 15-30 work days
- Payment Terms: TT



Product Specification

- Color: Silvery
- Corrosion Resistance: Yes
- Flexibility: No
- Durability: High
- Shockproof: Yes
- Package Contents: 1 Rear Embedded Part
- Weight: Standard
- Waterproof: Yes
- Shape: Square Rectangle
- Thickness: 4mm 6mm 8mm 10mm
- Highlight: rear embedded part,
embedded plates in concrete heavy duty,
standard embedded part



Product Description

Product Description:

One of the key features of the Embedded Parts Rear is its durability. The product is made of high-quality metal material that is resistant to wear and tear, making it ideal for heavy-duty use. This durability ensures that the Embedded Parts Rear will last for a long time, saving you money and time that would have been spent on frequent replacements.

The Embedded Parts Rear is also designed to have a standard weight, making it easy to carry and install. The product's weight does not compromise its shockproof and durability features, making it a reliable component that can be used in various settings.

The Embedded Parts Rear is a universal product that can be used in different devices and machines. Its compatibility with a wide range of equipment makes it a versatile component that can be used in various industries, including manufacturing, construction, and transportation.

To ensure that the Embedded Parts Rear is sturdy and reliable, it is designed with an embedded steel plate. This steel plate enhances the product's shockproof and durability features, making it a robust and long-lasting component that can withstand harsh conditions.

In summary, the Embedded Parts Rear is a non-prefabricated embedded part made of high-quality metal material that is shockproof, durable, and compatible with a wide range of devices and machines. Its embedded steel plate ensures that it is sturdy and reliable, making it an ideal component that can be used in various industrial settings.

Technical Parameters:

Durability	High
Size	Standard
Weight	Standard
Waterproof	Yes
Package Contents	1 Rear Embedded Part
Material	Metal
Installation Method	Punching Installation
Shockproof	Yes
Corrosion Resistance	Yes

Applications:

Our Embedded Parts are designed to withstand heavy-duty use and are shockproof, ensuring that your machinery will be safe and secure. The installation method is punching installation, providing a secure and reliable hold for your machinery. Each package contains one Rear Embedded Part, making it easy to install and secure your heavy equipment.

Our Embedded Parts are corrosion-resistant, ensuring that your machinery will remain in good condition despite exposure to harsh elements. The Embedded steel plate is made in Hebei, China, and is of the highest quality. We understand that each customer has unique needs, which is why we offer packaging details according to our customer's needs.



Packing and Shipping:

Product Packaging:

The embedded parts will be packed in a sturdy cardboard box.

The box will be labeled with the product name and specifications.

The parts will be securely placed in the box with cushioning to prevent damage during shipping.

Shipping:

The product will be shipped via a reliable courier service.
Customers will receive a tracking number to track their package.
The estimated delivery time will be provided to the customer at the time of purchase.
For international orders, customers are responsible for any customs fees or taxes.

FAQ:

Q: Where is the Embedded Parts product manufactured?
A: The Embedded Parts product is manufactured in Hebei, China.
Q: Is the Embedded Parts product certified?
A: Yes, the Embedded Parts product is certified with ISO9001.
Q: What is the minimum order quantity for the Embedded Parts product?
A: The minimum order quantity for the Embedded Parts product is negotiable.
Q: How much does the Embedded Parts product cost?
A: The price of the Embedded Parts product is negotiable.
Q: How is the Embedded Parts product packaged and delivered?
A: The Embedded Parts product is packaged according to customer needs and delivered within 15-30 work days.
Q: What are the payment terms for the Embedded Parts product?
A: The payment terms for the Embedded Parts product are TT.



Tianjin Baoli Gold Pipe Co., Ltd



+86-15022596169



tjbaolijin@126.com



galvmetal.com

Jinghai District, Tianjin City, China