



Waterproof Embedded Parts Shockproof for Professional Installations 280*280 300*300

Our Product Introduction

for more products please visit us on galvmetal.com

Basic Information

- Place of Origin: Hebei, China
- Certification: ISO9001
- Minimum Order Quantity: Negotiable
- Price: Negotiable
- Packaging Details: According to customer needs
- Delivery Time: 15-30 work days
- Payment Terms: TT

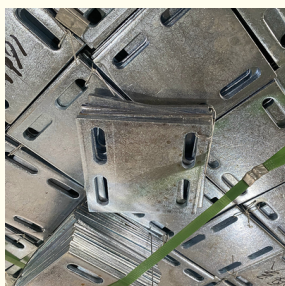


Product Specification

- Corrosion Resistance: Yes
- Shockproof: Yes
- Size: 100*100 120*120 140*140 150*150 180*180 190*190 200*200 250*250 280*280 300*300
- Installation Method: Punching Installation
- Color: Black
- Weight: Standard
- Package Contents: 1 Rear Embedded Part
- Compatibility: Universal
- Thickness: 4mm 6mm 8mm 10mm
- Highlight: **waterproof embedded parts,
embedded parts shockproof,
waterproof embedded steel plates**



More Images



Product Description

Product Description:

Another great attribute of our Rear Embedded Parts is their corrosion resistance. Made from materials that can withstand harsh weather conditions, our embedded parts are designed to last for years to come. This makes them an ideal choice for outdoor structures that are exposed to the elements.

Our Rear Embedded Parts are also waterproof, ensuring that they will not be damaged by moisture. This is particularly important for structures that are located in areas with high levels of rainfall or other forms of precipitation. With our embedded parts, you can rest easy knowing that your structures are protected from water damage.

Our Rear Embedded Parts come in an elegant black color, making them a stylish addition to your construction projects. Whether you are building a new structure or repairing an existing one, our embedded parts will blend seamlessly with your design.

In conclusion, if you are looking for the ultimate support and stability for your structures, look no further than our Rear Embedded Parts. With their universal compatibility, standard size, corrosion resistance, waterproofing, and stylish black color, our embedded parts are the perfect choice for any construction project. So why wait? Order your Rear Embedded Parts today and take the first step towards stronger, more durable structures!

Technical Parameters:

| Product Attribute | Value |
|----------------------|--|
| Product Name | Rear Embedded Parts |
| Product Type | Non prefabricated embedded parts |
| Size | Standard |
| Durability | High |
| Corrosion Resistance | Yes |
| Shockproof | Yes |
| Compatibility | Universal |
| Material | Metal |
| Waterproof | Yes |
| Package Contents | 1 Rear Embedded Part |
| Weight | Standard |
| Color | Black |
| Description | An embedded steel plate designed to fit in the rear of any compatible vehicle. Provides high durability, corrosion resistance, and shockproof capabilities. Compatible with all vehicles and is waterproof. Package includes 1 Rear Embedded Part. |

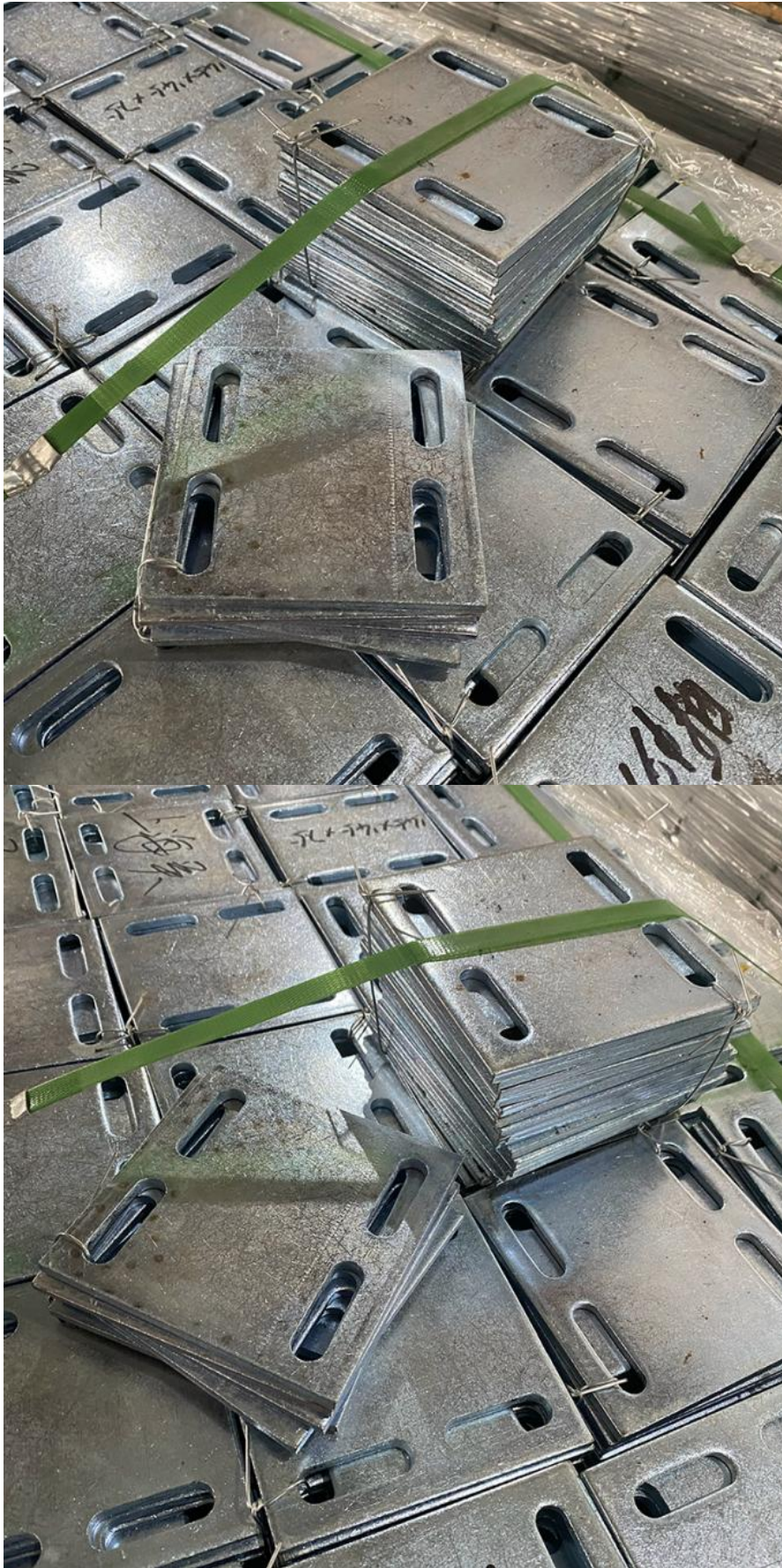
Applications:

The Rear Embedded Parts are made of metal and have a standard size. They are installed using punching installation methods and have no flexibility. The color of the product is black.

The Rear Embedded Parts have multiple product application occasions and scenarios. They can be used in construction projects where the goal is to create a strong foundation. The product is ideal for use in the construction of buildings, bridges, and other large structures.

The Rear Embedded Parts can also be used in the installation of large machinery and equipment that requires a strong anchor point.

The Rear Embedded Parts are a reliable product that can be trusted to provide a strong and stable foundation. They are an essential component in any construction project that requires anchor bolt embedded parts. The Rear Embedded Parts are manufactured to the highest standards and are designed to ensure that they can withstand even the most demanding environments.



Packing and Shipping:

Product Packaging:

The Rear Embedded Parts will be carefully packed in a sturdy cardboard box to ensure its safety during transit. The box will be sealed with tape to prevent any accidental opening.

Shipping:

The Rear Embedded Parts will be shipped through a reliable courier service within 2-3 working days of receiving the order. The estimated delivery time will be 5-7 business days, depending on the destination. A tracking number will be provided once the product has been

shipped.

FAQ:

Q: Where is the Rear Embedded Parts product manufactured?

A: The Rear Embedded Parts product is manufactured in Hebei, China.

Q: Is the Rear Embedded Parts product certified?

A: Yes, the Rear Embedded Parts product is certified with ISO9001.

Q: What is the minimum order quantity for the Rear Embedded Parts product?

A: The minimum order quantity for the Rear Embedded Parts product is negotiable.

Q: What is the price for the Rear Embedded Parts product?

A: The price for the Rear Embedded Parts product is negotiable.

Q: How is the Rear Embedded Parts product packaged and delivered?

A: The Rear Embedded Parts product is packaged according to customer needs and delivered within 15-30 work days. Payment terms are TT.



Tianjin Baoli Gold Pipe Co., Ltd



+86-15022596169



tjbaolijin@126.com



galvmetal.com

Jinghai District, Tianjin City, China